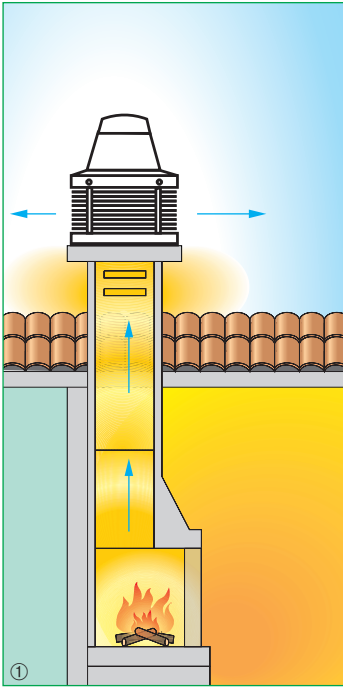


# TIRACAMINO® CHIMNEY EXTRACT FAN



- Ball-bearing-mounted induction motor to withstand high temperatures (approximately 200°C) for long periods of operation.
- Information label shows IMQ third party data and performance certification.
- Weather proof steel construction and anti-corrosion, polyester resin protection.
- Supplied with steel safety cable for long-term anchoring of fan to the base.
- Protection grille with steel safety, anti-bird rings..
- Advanced blade design reduces soot build up.
- **Complete with variable speed controller C 1.5 and base frame.**
- C 1.5 electronic speed controller for standard models (code 12966)
- Compliance to standards: please see page 84.

### Accessories

- Protective grille (Code 22700) for covering the moving parts when the unit is installed at low level (description on page 125).
- SCB Kit to flush-mount the C.1.5 control unit (description on page 125)

Wiring diagrams shown on page XXXIII.

■ **Designed to draw out smoke from fireplace. Can be used as a normal extractor fan when the fireplace is not lit. Not suitable for use with gas fires.**

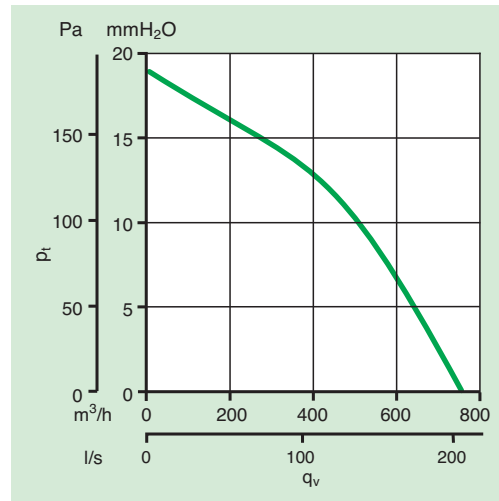


① Typical installation (if the internal size of the chimney flue is less than 15 x 15 cm or 17 cm diameter, the efficiency of the fan may be reduced)

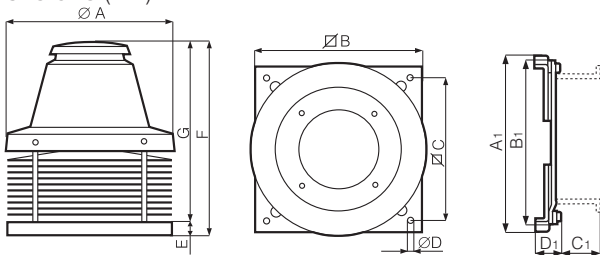
Supply and install a Tiracamino centrifugal extract fan for installation on chimney tops as manufactured exclusively by Vortice only for Vortice. All performance data should be third party IMQ (BEAB recognised equivalent) verified. The fan should be class 1 insulated and of weather proof steel construction with anti-corrosion, polyester resin protection. It should have an extract performance of 208.3 l/s in free air and have an inlet diameter of 170mm.

The motor should be a ball bearing mounted induction motor designed to withstand high temperatures (approx. 200°C for long periods of operation). The motor should include a thermal cut out device and be speed controllable by using the speed controller supplied. The turbine should have an advanced blade design to reduce soot build up and be protected by a circular anti-bird grille. It should be supplied complete with fitting base and steel safety cable for stable anchoring.

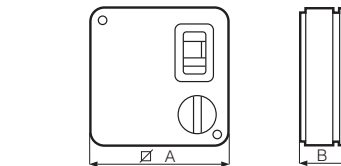
### Pressure/performance curve






### Dimensions (mm)



	Ø A	Ø B	Ø C	Ø D	E	F	G	A <sub>1</sub>	B <sub>1</sub>	C <sub>1</sub>	D <sub>1</sub>
<b>Tiracamino</b>	405	410	357	10	38	518	480	401	357	140	40



	Ø A	B
<b>C 1.5</b>	120	43

Product	Code	V ~ 50 Hz	W	A	Rpm	Delivery		P max		Lp dB(A) 3 m	Approvals	Inlet Ø mm	kg	Insulation	IP
						m³/h	l/s	mm H₂O	Pa						
 <b>Tiracamino</b>	<b>15000</b>	220-240	120	0.5	1400	750	208.3	19	186	52		170	14.3	 cl. I	X4

Conforms with ISO 3744 for noise and pressure levels